

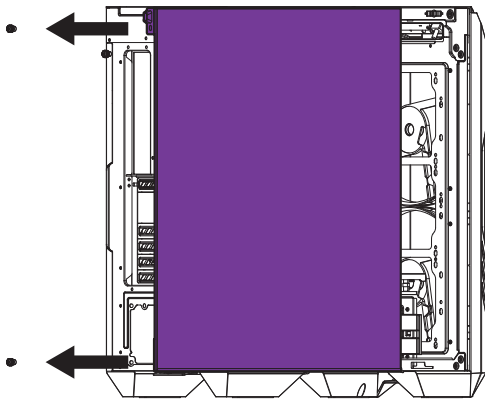


Make It Yours.

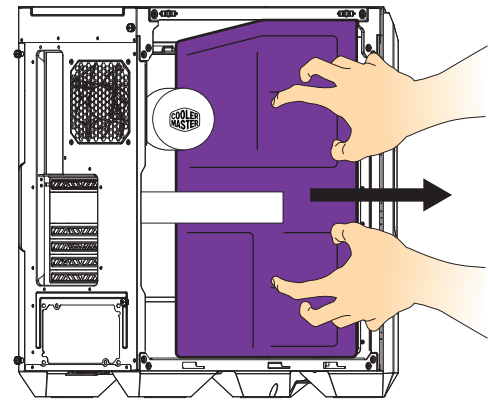
QUICK START GUIDE

Important: Please follow the **4 easy steps** below to ensure your PC is properly prepared before turning on. **DO NOT** turn on your PC before removing inner foam.

STEP 1 REMOVE INNER PACKAGING FOAM FROM PC

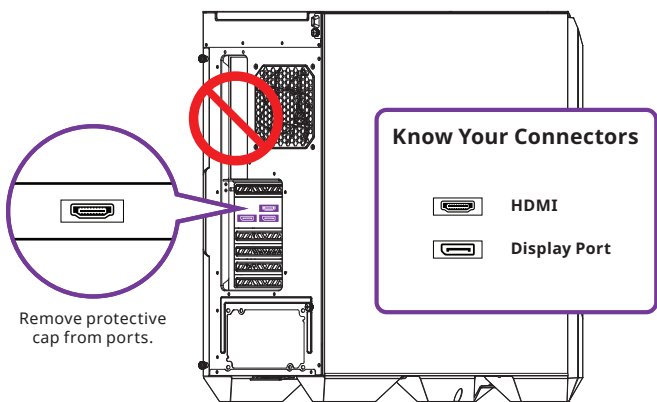


Remove screws from the left side of the glass panel. Then remove the glass panel.



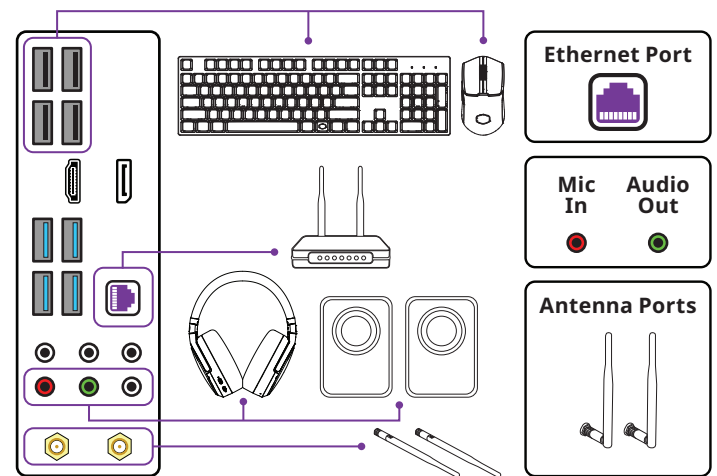
Carefully remove the protective foam inside the PC. Then put the glass panel and screws back on.

STEP 2 CONNECT TO YOUR MONITOR



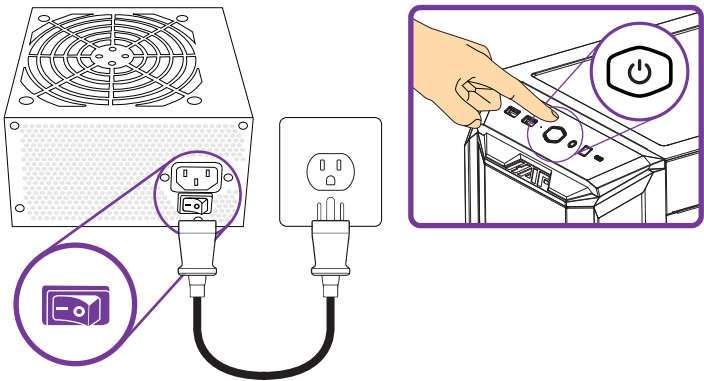
Connect your monitor display cable to an available video port on your graphics card. **DO NOT** connect your monitor display cable on your motherboard.

STEP 3 CONNECT YOUR PERIPHERALS



Connect your keyboard, mouse, audio and antennas/Ethernet to their matching ports on the motherboard.

STEP 4 POWER ON YOUR COOLER MASTER SYSTEM



Use the included power cord to connect your power supply unit to a wall outlet or surge protector.

Turn the power supply switch on (1 is for ON, 0 is for OFF).

Press the PC power button on top or the front.

FAQ

Why my PC does not turn on?

Step 1

Check the power outlet if there is electricity flowing with a different device. If you're using a surge protector, ensure that it's plugged into the power outlet and its power switch is on.

Step 2

Look for the PC's power supply in the rear and make sure the switch is on (1 is for ON, 0 is for OFF) and check the power cord is properly connected and not loose.

Step 3

Switch the PC's power cord with another power cord to check there's no issue with the power cord.

Why is my screen blank?

Please ensure that the monitor display cable is connected directly to the Video Graphics Card Port and not the Motherboard's Integrated Graphics Port.

What about missing parts, replacement parts and repair?

If you are missing any parts or accessories, please contact our customer service team. Your PC is covered for 1 Year for parts and labor. If your PC stops working, please contact our customer service team and we will send you the replacement parts for self-repair or start the warranty repair ticket.



For more information, go to
<https://landing.coolermaster.com/faq>



Make It Yours.